



GMT MONTHLY MEMBERSHIP PROGRESS REPORT

Results as of: 2/28/2017

Multiple District 31

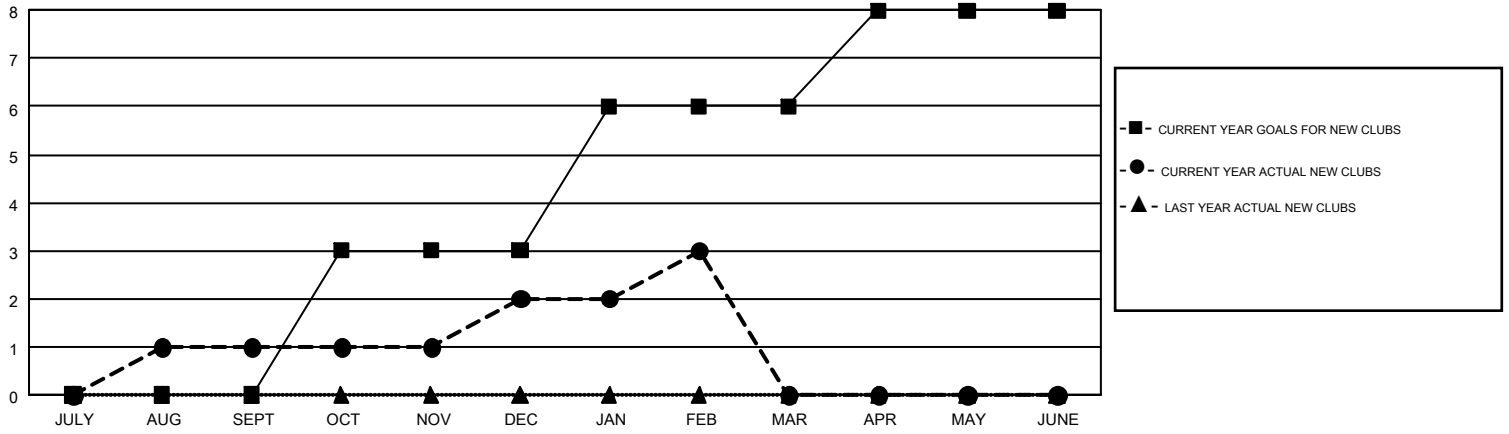
LOCATION: NORTH CAROLINA

GMT: HARVEY WHITLEY

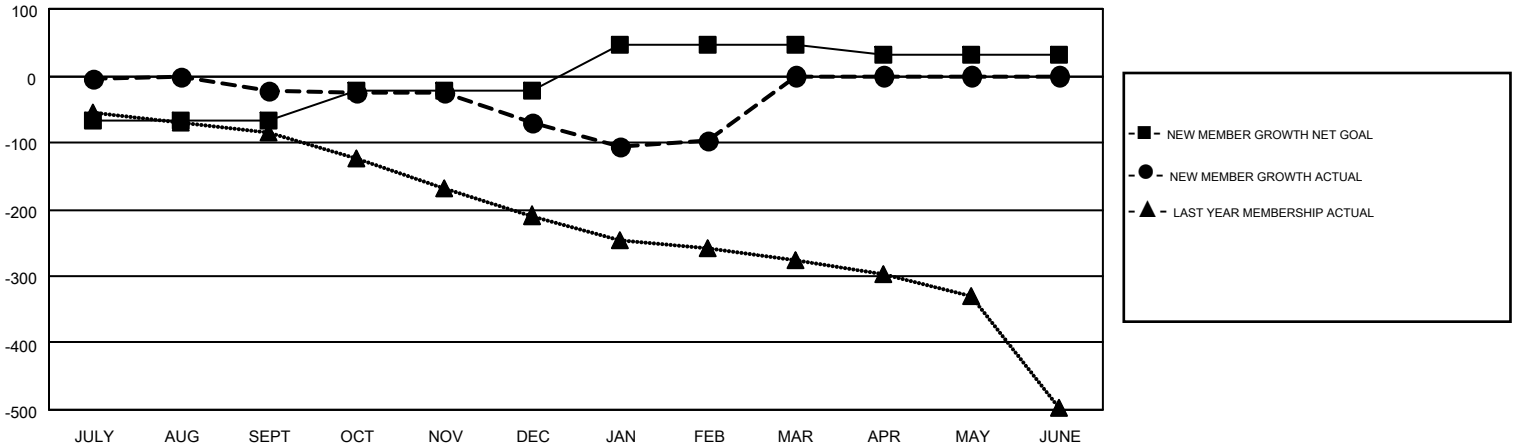
GMT CA 1

Clubs				Members			
RESULTS FOR 2016-2017				RESULTS FOR 2016-2017			
QUARTER	NEW CLUB GOAL	NEW CLUBS	DROPPED CLUBS	QUARTER	NEW MEMBER GROWTH NET GOAL (not reinstated or transfers)	NEW MEMBER GROWTH ACTUAL (not reinstated or transfers)	DROPPED MEMBERS ACTUAL (including transfers)
JULY/AUG/SEPT	0	1	0	JULY/AUG/SEPT	-66	211	233
OCT/NOV/DEC	3	1	3	OCT/NOV/DEC	43	127	175
JAN/FEB/MAR	3	1	1	JAN/FEB/MAR	68	124	151
APR/MAY/JUNE	2	0	0	APR/MAY/JUNE	-13	0	0

GOALS AND ACTUAL NEW CLUBS CUMULATIVE



GOALS AND ACTUAL MEMBERS CUMULATIVE



DROPPED CLUBS: 4	134 CLUBS OF 307 ADDED 1 OR MORE NEW MEMBERS	<u>GENDER DISTRIBUTION</u>	
		MALE	4,433 (70.54%)
		FEMALE	1,851 (29.46%)
<u>DROPPED MEMBERS</u>		TOTAL FAMILY UNIT MEMBERS	1,315
DECEASED	86	FAMILY MEMBERS PAYING HALF DUES	671
CLUB CANCELLED	2		
OTHER	471		
TOTAL	559		

[CLICK HERE FOR CUMULATIVE MEMBERSHIP DATA](#)